

7-13-65
3-4-71
3-4-71

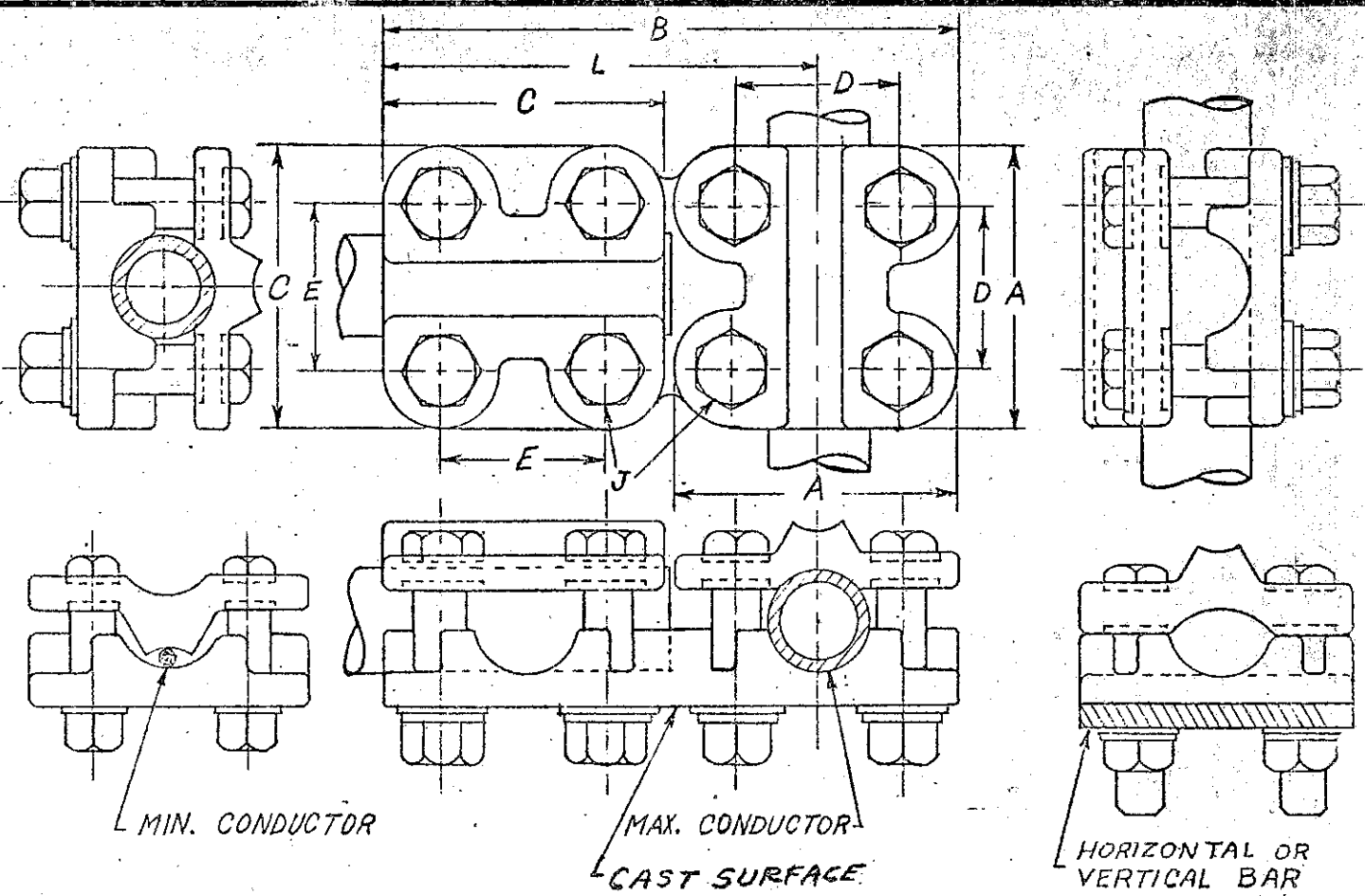
4
5
5

BROUGHT UP TO DATE
BY WBS
WAS
DD
DD
DD

4-22-54
11-26-54
12-7-54

1
2
3

DIMEN. OF BAR SIZE ADDED
CAT. No. WAS TCK
CAT. No. WAS TC



NOTE-
CONNECTOR: ELECTRICAL BRONZE
HARDWARE: BOLTS, NUTS, LOCK, AND FLAT WASHERS - SILICON BRONZE
"A" HEAD BOLT SPACING IS 1 1/2"
"B" HEAD BOLT SPACING IS NEMA STANDARD 1 3/4"
"C" HEAD BOLT SPACING IS 2 3/4"

CATALOG NUMBER	CONDUCTOR SIZE								DIMENSIONS IN INCHES							EAR TK.
	MAIN				TAP				INCHES							
	SMALL GROOVE		LARGE GROOVE		SMALL GROOVE		LARGE GROOVE		A	B	C	D	E	L	J	
TS-AA-3	#2 SOL. TO 350 MCM	1/4" 3/8"	400 MCM TO 800 MCM	1/2" 3/4"	#2 SOL. 350 MCM	1/4" 3/8"	400 MCM 800 MCM	1/2" 3/4"	2 7/16"	4 1/16"	2 7/16"	1 1/2"	1 1/2"	3 17/32"	3 1/8"	1/4"
TS-AA	#6 SOL. 300 MCM	1/4" 3/8"	350 MCM 850 MCM	1/2" 3/4"	#6 SOL. 300 MCM	1/4" 3/8"	350 MCM 850 MCM	1/2" 3/4"	3	6 3/8"	3	1 3/4"	1 3/4"	4 5/8"	1 1/2"	3/8"
TS-BA	#4/0 SOL. 800 MCM	1/2"	850 MCM 1500 MCM	3/4" 1"	#6 SOL. 300 MCM	1/4" 3/8"	350 MCM 850 MCM	1/2" 3/4"	3	6 3/8"	3 1/4"	1 3/4"	2	4 7/8"	1 1/2"	3/8"
TS-BB	#4/0 SOL. 800 MCM	1/2"	850 MCM 1500 MCM	3/4" 1"	#4/0 SOL. 800 MCM	1/2" 1"	850 MCM 1500 MCM	3/4" 1"	3 3/4"	6 1/4"	3 3/4"	2	2	5 1/8"	1 1/2"	3/8"
TS-CA	850 MCM 1500 MCM	3/4" 1"	1500 MCM 2000 MCM	1 1/4" 1 1/2"	#6 SOL. 350 MCM	1/4" 3/8"	350 MCM 850 MCM	1/2" 3/4"	4	7 1/8"	3	2 3/4"	3/4"	5 5/8"	1 1/2"	3/8"
TS-CB	850 MCM 1500 MCM	3/4" 1"	1500 MCM 2000 MCM	1 1/4" 1 1/2"	#4 SOL. 800 MCM	1/2" 1"	850 MCM 1500 MCM	3/4" 1"	4	7 3/8"	3 1/4"	2 3/4"	2	5 3/8"	1 1/2"	3/8"
TS-CC	850 MCM 1500 MCM	3/4" 1"	1500 MCM 2000 MCM	1 1/4" 1 1/2"	850 MCM 1500 MCM	3/4" 1"	1500 MCM 2000 MCM	1 1/4" 1 1/2"	4	8 3/8"	4	2 3/4"	2 3/4"	6 3/8"	1 1/2"	1/2"

4-14-54
WBS
CKD BY S

MULTIPLE CONNECTOR
HORIZONTAL OR VERTICAL
TAKE OFF.

ANDERSON BRASS WORKS, INC.
BIRMINGHAM, ALABAMA

CAT. NO. TS
DWG. NO. C-3021